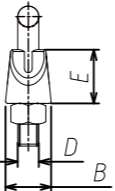
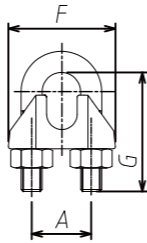


Wire Rope Clip

1. DIN741 Wire Rope Clip

Process: Casting
 Material: Malleable Iron
 Surface: Hot Dip Galvanized or Zinc Plating

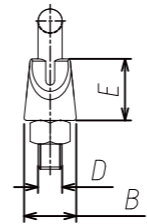
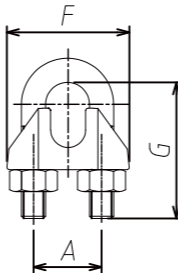
Part NO	Size (mm)	Weight 100pcs (kg)	Dimensions(mm)					
			A	B	D	E	F	G
TKR0240	3	1.4	9	10	4	10	21	16
TKR0241	5	1.5	11	11	5	10	23	19
TKR0242	6.5	2.1	13	12	5	11	26	23
TKR0243	8	4.1	16	14	6	15	30	26
TKR0244	10	6.8	19	18	8	17	34	34
TKR0245	11	7.2	20	19	8	18	36	36
TKR0246	13	12	24	23	10	21	42	45
TKR0247	14	13.5	25	23	10	22	44	47
TKR0248	16	21	29	26	12	26	50	51
TKR0249	19	28	32	29	12	30	54	63
TKR0250	22	40	37	33	14	34	61	71
TKR0251	26	44	41	35	14	37	65	81
TKR0252	30	66	48	37	16	43	74	94
TKR0253	34	85	52	42	16	50	80	104
TKR0254	40	104	58	45	16	55	88	124



3. US Type G450 Wire Rope Clip

Process: Forging
 Material: Carbon Steel
 Surface: Hot Dip Galvanized or Zinc Plating

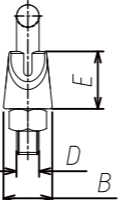
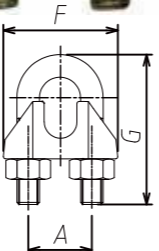
Part No.	Rope Size (in.)	Weight Per 100 (lbs.)	Dimensions (in.)					
			A	B	D	E	F	G
TKR0267	1/8	6	0.47	0.81	0.22	0.37	0.81	0.72
TKR0268	3/16	10	0.59	0.94	0.25	0.5	0.94	0.97
TKR0269	1/4	19	0.75	1.19	0.31	0.66	1.19	1.03
TKR0270	5/16	28	0.88	1.31	0.38	0.73	1.31	1.38
TKR0271	3/8	48	1.00	1.63	0.44	0.91	1.63	1.50
TKR0272	7/16	78	1.19	1.91	0.50	1.13	1.91	1.88
TKR0273	1/2	80	1.19	1.91	0.50	1.13	1.91	1.88
TKR0274	9/16	109	1.31	2.06	0.56	1.34	2.06	2.25
TKR0275	5/8	110	1.31	2.06	0.56	1.34	2.06	2.25
TKR0276	3/4	142	1.50	2.25	0.62	1.39	2.25	2.75
TKR0277	7/8	212	1.75	2.44	0.75	1.58	2.44	3.12
TKR0278	1	252	1.88	2.63	0.75	1.77	2.63	3.50
TKR0279	1-1/8	283	2.00	2.81	0.75	1.91	2.81	3.88
TKR0280	1-1/4	438	2.34	3.13	0.88	2.17	3.13	4.44
TKR0281	1-3/8	442	2.31	3.13	0.88	2.31	3.13	4.44
TKR0282	1-1/2	544	2.59	3.41	0.88	2.44	3.41	4.94
TKR0283	1-5/8	704	2.75	3.63	1.00	2.66	3.63	5.31
TKR0284	1-3/4	934	3.06	3.81	1.13	2.92	3.81	5.75
TKR0285	2	1300	3.38	4.44	1.25	3.03	4.44	6.44
TKR0286	2-1/4	1600	3.88	4.56	1.25	3.19	4.56	7.13
TKR0287	2-1/2	1900	4.13	4.69	1.25	3.69	4.69	7.69
TKR0288	2-3/4	2300	4.38	5.00	1.25	4.88	5.00	8.31
TKR0289	3	3100	4.75	5.31	1.50	4.44	5.31	9.19
TKR0290	3-1/2	4000	5.50	6.19	1.50	6.00	6.19	10.75



2. DIN1142 Wire Rope Clip

Process: Casting
 Material: Malleable Iron
 Surface: Hot Dip Galvanized or Zinc Plating

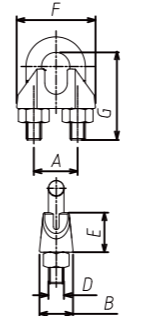
Part No.	Rope Size(mm)	Weight Per 100pcs (kg)	Dimensions(mm)					
			A	B	D	E	F	G
TKR0255	5	2.08	12	13	5	13	25	20
TKR0256	6.5	4	14	16	6	14	30	26
TKR0257	8	8.2	18	20	8	18	39	33
TKR0258	10	9.2	20	20	8	21	40	38
TKR0259	13	27.5	27	28	12	29	5	52
TKR0260	16	43	32	32	14	35	64	64
TKR0261	19	49	36	32	14	40	68	69
TKR0262	22	68	40	34	16	44	74	80
TKR0263	26	117	46	38	20	51	84	91
TKR0264	30	140	54	41	20	59	95	107
TKR0265	34	213	58	45	22	67	105	119
TKR0266	40	268	68	49	24	77	117	135



4. US Type Malleable Wire Rope Clip

Process: Casting
 Material: Malleable Iron
 Surface: Hot Dip Galvanized or Zinc Plating

Part No.	Rope Size (in.)	Weight 100pcs (lbs.)	Dimensions(mm)					
			A	B	D	E	F	G
TKR0291	1/8	1.50	11.00	14.00	10-24	10.80	22.00	20.00
TKR0292	3/16	3.00	13.50	15.00	1/4-20	13.00	26.00	24.00
TKR0293	1/4	5.18	17.00	18.50	5/16-18	15.00	32.00	31.50
TKR0294	5/16	5.95	18.30	20.00	5/16-18	16.00	35.00	34.00
TKR0295	3/8	10.01	22.50	22.00	3/8-16	22.00	40.50	41.80
TKR0296	7/16	11.43	24.00	23.00	3/8-16	22.00	43.00	42.80
TKR0297	1/2	17.42	27.00	26.00	7/16-14	23.30	49.00	53.90
TKR0298	9/16	22.56	30.00	26.50	1/2-13	27.00	52.50	54.70
TKR0299	5/8	24.84	33.00	28.50	1/2-13	28.00	57.50	59.20
TKR0300	3/4	36.53	34.50	32.00	6/19-12	34.00	31.00	68.70
TKR0301	7/8	53.23	41.00	37.00	5/8-11	38.00	71.00	78.00
TKR0302	1	68.32	45.50	42.00	5/8-11	43.00	77.50	87.50

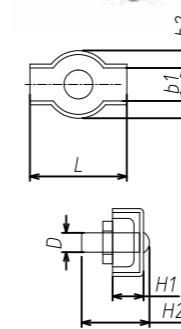
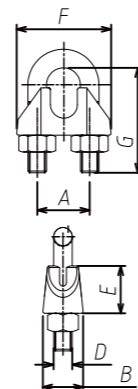


Wire Rope Clip

5. Type A Wire Rope Clip

Process: Casting
Material: Malleable Iron
Surface: Hot Dip Galvanized or Zinc Plating

Part No.	Rope Size (mm)	Weight 100pcs (kg)	Dimensions(mm)					
			A	B	D	E	F	G
TKR0303	5	2.08	12	13	5	13	25	20
TKR0304	6.5	4	14	16	6	14	30	26
TKR0305	8	8.2	18	20	8	18	39	33
TKR0306	10	9.2	20	20	8	21	40	38
TKR0307	13	27.5	17	28	12	29	55	52
TKR0308	16	43	32	32	14	35	64	64
TKR0309	19	49	36	32	14	40	68	69
TKR0310	22	68	40	34	16	44	74	870
TKR0311	26	117	46	38	20	51	84	91
TKR0312	30	140	54	41	20	59	95	107
TKR0313	34	213	60	45	22	67	105	119
TKR0314	40	268	68	49	24	77	117	135



7. Simple Wire Rope Clip

Process: Stamping
Material: Carbon Steel or Stainless Steel
Surface: Zinc Plating or Polishing

Part No.	Rope Size (mm)	DIMENSIONS(mm)					
		b1	b2	D	h1	h2	L
TKR0326	2	4	12	M4	5	14	15
TKR0327	3	6	14	M4	7	14	17
TKR0328	4	8	18	M5	7	18	20
TKR0329	5	10	20	M5	8	18	25
TKR0330	6	12	24	M6	9	23	30
TKR0331	8	17	30	M8	13	25	37
TKC093	2	4	12	M4	5	14	30
TKC094	3	6	14	M4	7	14	35
TKC095	4	8	18	M5	7	18	40
TKC096	5	10	20	M5	8	18	50
TKC097	6	12	24	M6	9	23	60
TKC098	8	17	30	M8	13	25	75
TKC099	10	21	35	M10	16	32	95

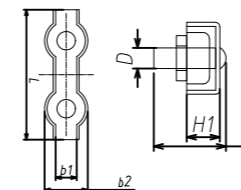
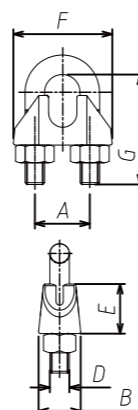
8. Duplex Wire Rope Clip

Process: Stamping
Material: Carbon Steel or Stainless Steel
Surface: Zinc Plating or Polishing

6. Type B Wire Rope Clip

Process: Casting
Material: Malleable Iron
Surface: Hot Dip Galvanized or Zinc Plating

Part No.	Rope Size (mm)	Weight 100pcs (kg)	Dimensions(mm)					
			A	B	D	E	F	G
TKR0315	3	1.17	9	12	4	9.5	19	20
TKR0316	5	1.70	11	13.5	5	10.8	22	26
TKR0317	6.5	2.53	12.5	15.5	5	11.5	25	26
TKR0318	8	3.80	15.5	18	6	16	31	31
TKR0319	10	7.93	21	22	8	20	40	37
TKR0320	13	14.40	25	25	10	26	47	46
TKR0321	16	23.08	30	28	12	31	55	57
TKR0322	17.5	26.80	33	28.5	12	35	58.5	64
TKR0323	19	44.30	36.5	31	16	36	65	71
TKR0324	22	57.00	40	36	16	43	72	77
TKR0325	26	88.43	45	40	20	48	80	88



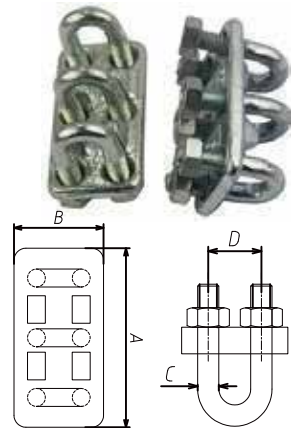
Part No.	MIN-MAX SIZE (mm)	Dimensions(mm)					
		b1	b2	D	h1	h2	L
TKR0332	2	4	12	M4	5	14	30
TKR0333	3	6	14	M4	7	14	35
TKR0334	4	8	18	M5	7	18	40
TKR0335	5	10	20	M5	8	18	50
TKR0336	6	12	24	M6	9	23	60
TKR0337	8	17	30	M8	13	25	75
TKR0338	10	21	35	M10	16	32	95

Wire Rope Clip

9. Triple Wire Rope Clip

Process: Forging
 Material: Malleable Iron
 Surface: Hot Dip Galvanized or Zinc Plating

Part No.	Size (mm)	Weight (kg)	Dimensions(mm)			
			A	B	C	D
TKR0350	6	0.15	67.5	30.5	5	9
TKR0351	8	0.2	67.5	34	7	10



10. Beam Clamp

Process: Casting
 Material: Malleable Iron
 Surface: Hot Dip Galvanized or Zinc Plating

Part No.	Open Size (mm)	Bolt	Hole Dia. (mm)	Weight (kg)	Dimensions(mm)			
					D	L	W	H
TKR0352	18	M8×30	8	0.09	17	34	18.5	36
TKR0353	20	M8×35	10.5	0.11	20	38	21	40
TKR0354	25	M10×40	12.5	0.158	25	45	24	45
TKR0355	35	M10×55	14	0.305	30	58	30	53
TKR0356	45	M10×55	15	0.34	30	68	32	52

